

Representation of Serendipitous Scientific Data

NASA's Jet Propulsion Laboratory, Pasadena, California

A computer program defines and implements an innovative kind of data structure than can be used for representing information derived from serendipitous discoveries made via collection of scientific data on long exploratory spacecraft missions. Data structures capable of collecting any kind of data can easily be implemented in advance, but the task of designing a fixed and efficient data structure suitable for processing raw data into useful information and taking advantage of serendipitous scientific discovery is becoming increasingly

difficult as missions go deeper into space. The present software eases the task by enabling definition of arbitrarily complex data structures that can adapt at run time as raw data are transformed into other types of information. This software runs on a variety of computers, and can be distributed in either source code or binary code form. It must be run in conjunction with any one of a number of Lisp compilers that are available commercially or as shareware. It has no specific memory requirements and depends upon the other software with

which it is used. This program is implemented as a library that is called by, and becomes folded into, the other software with which it is used.

This program was written by Mark James of Caltech for NASA's Jet Propulsion Laboratory. For further information, access the Technical Support Package (TSP) free online at www.techbriefs.com/tsp under the Software category.

This software is available for commercial licensing. Please contact Karina Edmonds of the California Institute of Technology at (626) 395-2322. Refer to NPO-42086.

Forecasting of Storm-Surge Floods Using ADCIRC and Optimized DEMs

Maximum water levels are mapped for Hurricanes Camille and Katrina.

Stennis Space Center, Mississippi

Increasing the accuracy of storm-surge flood forecasts is essential for improving preparedness for hurricanes and other severe storms and, in particular, for optimizing evacuation scenarios. An interactive database, developed by WorldWinds, Inc., contains atlases of storm-surge flood levels for the Louisiana/Mississippi gulf coast region. These atlases were developed to improve forecasting of flooding along the coastline and estuaries and in adjacent inland areas. Storm-surge heights depend on a complex interaction of several factors, including: storm size, central minimum pressure, forward speed of motion, bottom topography near the point of landfall, astronomical tides, and, most importantly, maximum wind speed.

The information in the atlases was generated in over 100 computational simulations, partly by use of a parallel-processing version of the ADvanced CIRCulation (ADCIRC) model. ADCIRC is a nonlinear computational model of hydrodynamics, developed by the U.S. Army Corps of Engineers and the US Navy, as a family of two- and three-dimensional finite-element-based codes. It affords a capability for simulating tidal circulation and storm-surge propagation over very large computational domains, while simultaneously providing high-resolution output in areas of complex shoreline and bathymetry. The ADCIRC finite-element grid for this project covered the Gulf of Mexico and contiguous basins, extending into the deep Atlantic

Ocean with progressively higher resolution approaching the study area. The advantage of using ADCIRC over other storm-surge models, such as SLOSH, is that input conditions can include all or part of wind stress, tides, wave stress, and river discharge, which serve to make the model output more accurate.

To keep the computational load manageable, this work was conducted using only the wind stress, calculated by using historical data from Hurricane Camille,

as the input condition for the model. Hurricane storm-surge simulations were performed on an eight-node Linux computer cluster. Each node contained dual 2-GHz processors, 2GB of memory, and a 40GB hard drive. The digital elevation model (DEM) for this region was specified using a combination of Navy data (over water), NOAA data (for the coastline), and optimized Interferometric Synthetic Aperture Radar data (over land). This high-resolution topographi-

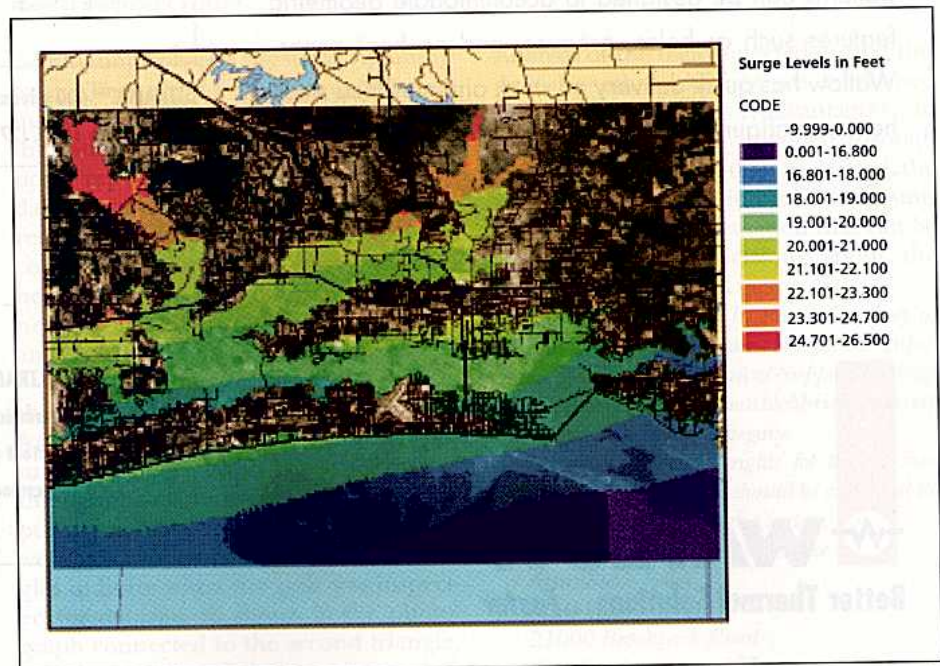


Figure 1. This MEOW Map shows the maximum storm surge at each finite-element node based on all simulations of category-3 hurricanes in the affected area.

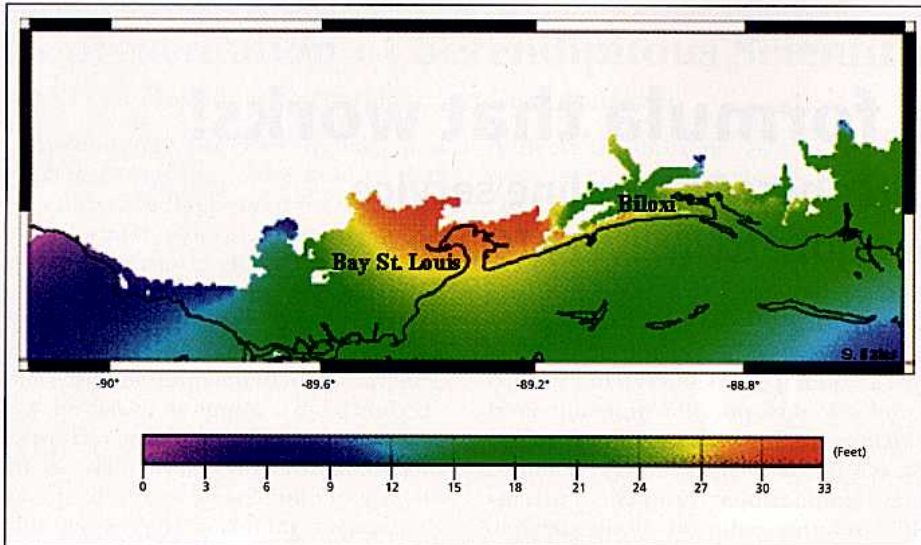


Figure 2. ADCIRC Calculated Storm-Surge Heights for Hurricane Katrina on August 29, 2005, at 11 a.m. local time. This image shows a 25- to 30-ft (≈ 4.5 - to 9.1-m) storm surge in the Bay St. Louis and Pass Christian communities.

cal data of the Mississippi coastal region provided the ADCIRC model with improved input with which to calculate improved storm-surge forecasts.

Also used in the simulations was a commercially developed rainfall inundation model that originated in research performed for a NASA dual-use project. The rainfall model accepts as input an elevation grid, coordinates to a source cell, and

the desired inundation level. Software utilities that accompany the model translate United States Geological Survey digital elevation maps, as well as ASCII grids, into the correct format. The source cell is specified in the coordinates of the elevation grid, and the inundation level (a floating-point number) is specified in a unit of measurement compatible with that used for the input elevation. The

rainfall simulations were performed for various hurricane landfall scenarios that included different intensities, storm sizes, forward speeds, and landfall locations.

Typically, each hurricane simulation, started 3 days of simulated time before Camille's landfall, took about 5 hours of computing time in parallel processing on all sixteen processors. The results of the ADCIRC and rainfall simulations were composited to determine the highest storm-surge value possible for each grid node; the resulting maps are known as maximum envelope of water (MEOW) maps.

Figure 1 shows the maximum storm surge for a Category 3 storm in the vicinity of the back bay of Biloxi, MS. The maximum storm surge is approximately 20 ft (≈ 6 m) inside the bay. Over most of the bay area, the storm surge varies between 15 and 25 ft (≈ 4.5 and 7.6 m). Published ground measurements at various discrete locations during Hurricane Camille show that a maximum storm surge of over 22 ft (≈ 6.7 m) occurred at Pass Christian, MS, west of Biloxi. Emergency planners and local government officials make public evacuation plans based on MEOW maps.

Figure 2 depicts ADCIRC computer model simulation of Hurricane Katrina's storm surge, showing a 25- to 30-ft (≈ 4.5 - to 9.1-m) wall of water, pushed by 140-mph (≈ 225 -km/h) winds, slamming into the Louisiana/Mississippi Gulf Coast. The maximum surge from Katrina was higher than Camille and covered a wider region, even though the intensity of the wind was slightly less. This happened because Katrina's strong winds covered a larger area and Katrina moved more slowly than Camille, allowing more time for the water to accumulate.

At the time of this reporting, technical support and parallel-computing resources have been provided to the Louisiana Department of Natural Resources, one private firm, and NASA, to model hurricane storm-surge flooding in southeastern Louisiana and along the Mississippi Gulf Coast.


This work was done by Elizabeth Valenti and Patrick Fitzpatrick of WorldWinds, Inc. for Stennis Space Center.

In accordance with Public Law 96-517, the contractor has elected to retain title to this invention. Inquiries concerning rights for the commercial use should be addressed to:

*WorldWinds, Inc.
Stennis Space Center
Building 1103, Suite 213C
Stennis Space Center, MS 39529
Phone No.: (228) 688-1468*

Refer to SSC-00229, volume and number of this NASA Tech Briefs issue, and the page number.

eSolders



Engineered Solders:

- Precise chemistries and physical properties
- Lab-tested and field-proven
- Reliable performance and excellent technical service

Products and Applications:

- Pure indium for low temperature sealing
- Indium alloys for step soldering and thermal interfacing
- AuSn alloys for fluxless die-attach and hermetic packaging

www.esolders.com esolders@indium.com

- Wire
- Washers
- Squares
- Frames
- Foil
- Flux
- Arrays
- Split Rings
- Ribbon
- Spheres
- Paste
- Custom Shapes

ASIA: Singapore: +65 6268 8678

CHINA: Suzhou, Liuzhou, Shenzhen: +86 (0)512 628 34900

EUROPE: Milton Keynes, Torino: +44 (0) 1908 580400

USA: Utica, Chicago: +1 315 853 4900

